

# DIRT CHEAP LUMBER PRICES

2X4	8'	10'	12'	14'	16'	18'	20'		
#2 SPF	\$ 2.04	\$ 2.56	\$ 2.99	\$ 3.93	\$ 4.40	\$ 4.76	\$ 5.29		
TREATED	\$ 2.33	\$ 2.91	\$ 3.50	\$ 4.18	\$ 5.24				
2X6	8'	10'	12'	14'	16'	18'	20'	22'	24'
#2 SPF	\$ 3.25	\$ 4.21	\$ 5.02	\$ 5.72	\$ 6.59	\$ 8.09	\$ 8.36	\$ 13.49	\$ 14.71
TREATED	\$ 3.32	\$ 4.31	\$ 5.17	\$ 6.39	\$ 7.25	\$ 12.40	\$ 14.81		
TREATED T&G	\$ 4.67	\$ 6.01	\$ 7.21	\$ 8.58	\$ 9.81				
2X8	8'	10'	12'	14'	16'	18'	20'	22'	24'
#2 SYP	\$ 3.50	\$ 4.37	\$ 5.21	\$ 6.37	\$ 7.66	\$ 9.31	\$ 10.51		
TREATED	\$ 4.67	\$ 5.84	\$ 7.01	\$ 8.48	\$ 10.02	\$ 17.47	\$ 20.26		
2X10	8'	10'	12'	14'	16'	18'	20'	22'	24'
#2 SYP	\$ 4.49	\$ 5.97	\$ 7.16	\$ 8.35	\$ 9.48	\$ 10.40	\$ 12.80		
TREATED	\$ 6.13	\$ 8.09	\$ 9.71	\$ 11.33	\$ 12.88	\$ 20.75	\$ 26.28		
2X12	8'	10'	12'	14'	16'	18'	20'	22'	24'
#2 SYP	\$ 6.81	\$ 8.21	\$ 11.11	\$ 11.81	\$ 13.61	\$ 14.71	\$ 18.68		
TREATED	\$ 10.72	\$ 12.44	\$ 15.30	\$ 17.13	\$ 19.78	\$ 25.27	\$ 31.02		
TREATED BOARDS	8'	10'	12'	14'	16'	18'	20'	22'	24'
1X4 TREATED	\$ 2.55	\$ 3.41	\$ 4.00						
1X6 TREATED	\$ 3.36	\$ 4.65	\$ 5.51						
1X8 TREATED	\$ 4.95		\$ 7.29						
TREATED DECKING	8'	10'	12'	14'	16'	18'	20'	22'	24'
5/4X6 STANDARD	\$ 2.93	\$ 3.58	\$ 4.30	\$ 4.90	\$ 5.86				
TREATED TIMBERS	8'	10'	12'	14'	16'	18'	20'	22'	24'
4X4 TREATED	\$ 6.54	\$ 7.21	\$ 8.84	\$ 10.82	\$ 13.33				
4X6 TREATED	\$ 9.41	\$ 11.64	\$ 13.96	\$ 16.29	\$ 19.02	\$ 28.09	\$ 35.22		
6X6 TREATED	\$ 13.55	\$ 17.67	\$ 21.20	\$ 24.74	\$ 27.11	\$ 45.90	\$ 53.32	\$ 76.74	\$ 89.36

FREE DELIVERY ON QUALIFYING ORDERS REASONABLE RATES ON THOSE THAT DON'T



**A.W. GRAHAM LUMBER LLC**

137 MADDOX PIKE

FLEMINGSBURG, KY 41041

PH 606-845-9663 (WOOD) 1-877-845-9663 (WOOD)

FAX 1-866-241-2558

[WWW.GRAHAMLUMBER.COM](http://WWW.GRAHAMLUMBER.COM)

PRICES EXPIRE ON

9/25/2010

# DIRT CHEAP LUMBER PRICES

## STUDS

SIZE	TRIM	GRADE	PRICE
2X4	92 to 96"	ECON	\$1.65
2X4	92 5/8"	STUD	\$1.82
2X4	104 5/8"	STUD	\$2.11
2X6	92 5/8"	STUD	\$3.46
2X6	104 5/8"	STUD	\$3.98



## OSB

SIZE	PRICE
7/16"	\$ 6.75
5/8 SE	\$10.71
3/4 TG	\$13.03



3/4 TG	\$20.79
--------	---------

[www.huberwood.com](http://www.huberwood.com)



9 OUT OF 10 BUILDERS  
THAT TRY ADVANTECH  
STICK WITH ADVANTECH  
50 YR LIMITED WARRANTY

ADVANTECH FLOORING HAS BEEN VOTED THE #1 QUALITY BRAND LEADER  
BY BUILDERS FOR SEVEN YEARS RUNNING  
GREATER WATER RESISTANCE THAN COMMODITY OSB OR PLYWOOD  
NO SANDING DUE TO MOISTURE GUARANTEED !!!!

## SHEATHING PLYWOOD

SIZE	PRICE
1/2 CDX	\$14.08
5/8 CDX	\$14.77
3/4 CDX	\$18.68



## TREATED PLYWOOD

SIZE	PRICE
1/2"	\$ 25.81
3/4"	\$ 31.71

### 3/8" 4X8 PLYBEAD

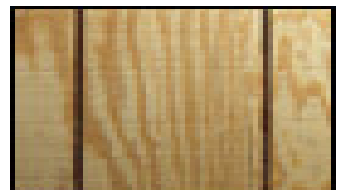
SIZE	PRICE
3/8"	\$21.99

### 3/8" 4X8 PLYBEAD



SANDED FACE BEADED 1.6" OC  
DISTINCTIVE BEADED LOOK

### 4X8 T-111 SIDING



ROUGH SAWN TEXTURED FACE  
3/8 4" OC & 5/8' 8" OC GROOVES

### 4X8 T-111 SIDING

SIZE	PRICE
3/8"	\$19.99
5/8"	\$26.79



## A.W. GRAHAM LUMBER LLC

137 MADDOX PIKE  
FLEMINGSBURG, KY 41041  
PH 606-845-9663 (WOOD) 1-877-845-9663 (WOOD)  
FAX 1-866-241-2558 or [www.grahamlumber.com](http://www.grahamlumber.com)

**PRICES EXPIRE ON 9/25/2010**